



## Features

- ◇ Simple structure, combined with vacuum pump and suction cup .
- ◇ Large flow and flow-saving, mainly used for handling of light and porous objects such as PCB.
- ◇ Easy to install and maintain ,cost effective.



## How to order

SLF 180 S 5 - WS

① ② ③ ④ ⑤

① Series	② Size	③ Specification of vacuum pump	④ Diameter of suction cup	⑤ Suction cup material
SLF	180 - 180×180mm 140 - 140×140mm	<b>Default</b> - External blower <b>W</b> - External vacuum pump <b>S</b> - Built-in flow type vacuum pump <b>X</b> - Built-in vacuum type vacuum pump (Note: Built-in vacuum pump type only for 180 size)	<b>Nil</b> - SPC7 <b>3</b> - SPC3 <b>5</b> - SPC5	<b>Nil</b> - NBR <b>WS</b> - White silicone <b>E</b> - EPDM

## Specifications

Series	Matrix size	Suction cup size	Suction cup material	Specification of cartridge
SLF	180 - 180×180mm 140 - 140×140mm	<b>SPC3</b> - M5M <b>SPC5</b> - M5M <b>SPC7</b> - M5M	<b>N</b> - NBR <b>WS</b> - White silicone <b>E</b> - EPDM	Nil W AS AX

## Technical parameters

### External blower type

Model	Working temperature (°C)	Air supply pressure range (bar)	Vacuum source
SLF140 SLF180	0-60(Non-freezing)	1-7	External blower

### External vacuum pump type

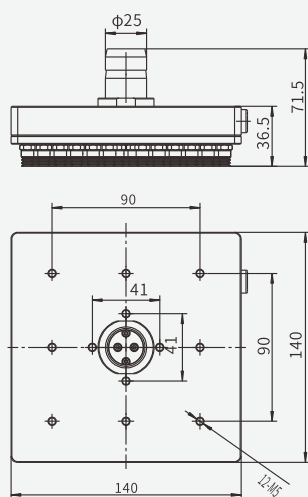
Model	Working temperature (°C)	Air supply pressure range (bar)	Vacuum source
SLF140W SLF180W	0-60(Non-freezing)	1-7	External large-flow type vacuum pump

### Built-in vacuum pump

Model	Working temperature (°C)	Operating pressure range(bar)	Air supply pressure range(bar)	Max.vacuum flow(NL/min)	Air consumption (NL/min)	Max.vacuum level(-kPa)
SLF180S SLF180X	0-60 (Non-freezing)	1-7	5.0 5.0	242 250	360 480	72 85

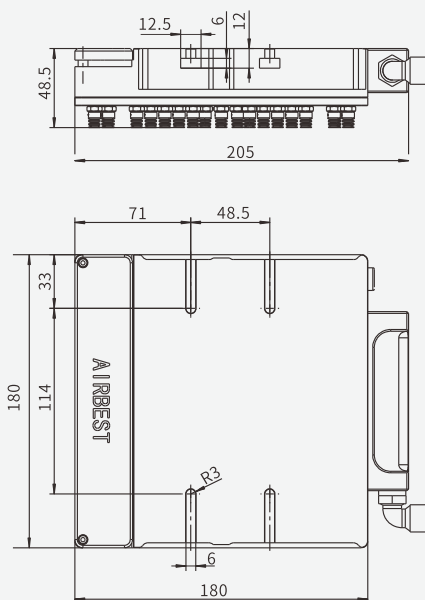
**Dimensions(mm)**

External blower

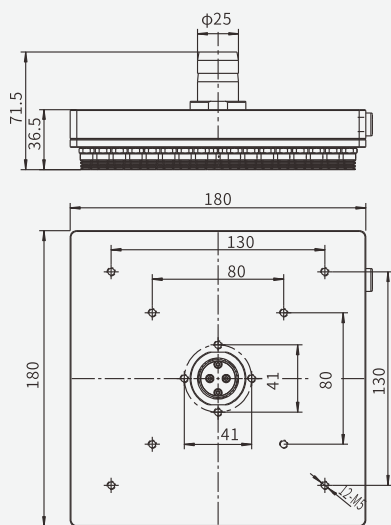


SLF140

Built-in vacuum pump

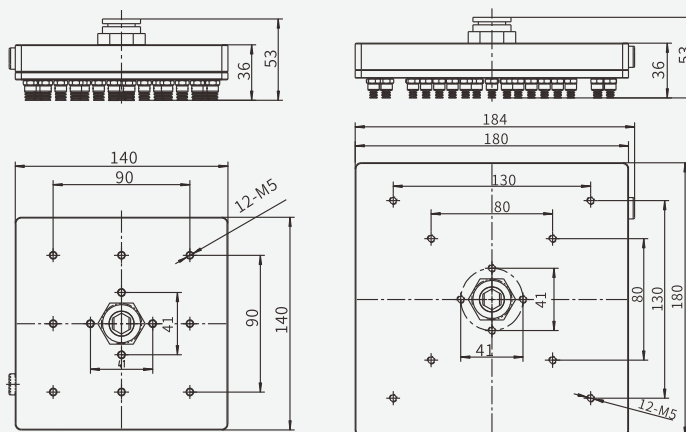


SLF180S(X)



SLF180

External vacuum pump



SLF140W

SLF180W